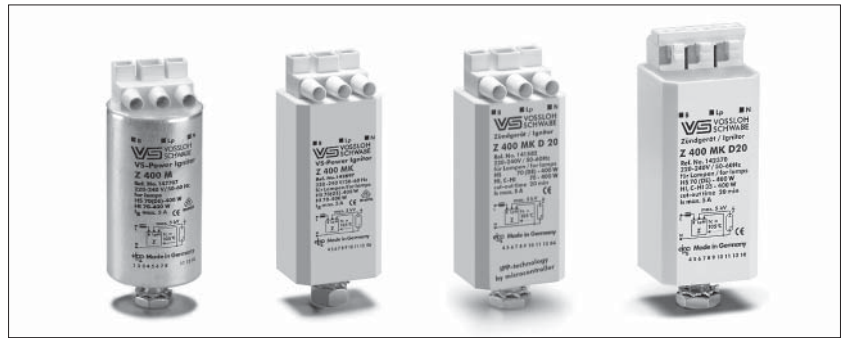
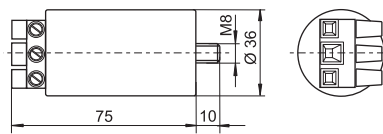


Electronic Superimposed Ignitors for HS Lamps 70 (DE) to 400 W and HI Lamps 35 to 400 W

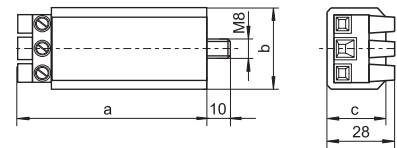
Standard version or with automatic switch-off
Compact shape
For high pressure sodium lamps (HS), metal halide lamps (HI) and ceramic discharge lamps (C-HI)
Ignition voltage: 4–5 kV
Phasing of the ignition voltage: 60–90 °el and 240–270 °el
Max. permitted casing temperature: 105 °C
Fastening: male nipple with pre-assembled washer and nut
For luminaires of protection class I and II
For luminaires of protection class I (140594, 147707)



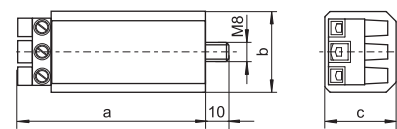
Al casing



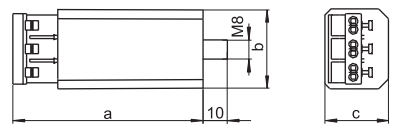
PC casing - K



PC casing - K D20



PC casing - with push-in terminals



Type	Ref. No.	Voltage AC 50–60 Hz V	Max. lamp current A	Internal loss W	Inherent heating K	Ignition voltage kV	Load capacity pF	Switch-off time sec./Hz	Casing d (∅) mm	a mm	b mm	c mm	Weight g
Aluminium casing (Al) with screw terminals: 0.75–4 mm²													
Z 400 M	140594	220–240	5	< 3	< 35	4–5	20–50	—	35	76	—	—	140
Z 400 M VS-Power	147707**	220–240	5	< 3	< 35	4–5	20–50	—	35	76	—	—	140
Z 400 M S	140693	220–240	5	< 3	< 35	4–5	20–50	—	35	76	—	—	140
Plastic casing (PC) with screw terminals: 0.75–4 mm²													
Z 400 M K	140597	220–240	5	< 3	< 35	4–5	20–50	—	—	78	34	27	130
Z 400 M K VS-Power	142897**	220–240	5	< 3	< 35	4–5	20–50	—	—	78	34	27	130
Z 400 M K D20	141582*	220–240	5	< 3	< 35	4–5	20–50	1216/50–60	—	80	34	30	145
Plastic casing (PC) with push-in terminals: 0.5–2.5 mm²													
Z 400 M K D20	142370*	220–240	5	< 3	< 35	4–5	20–50	1216/50–60	—	83	34	30	145

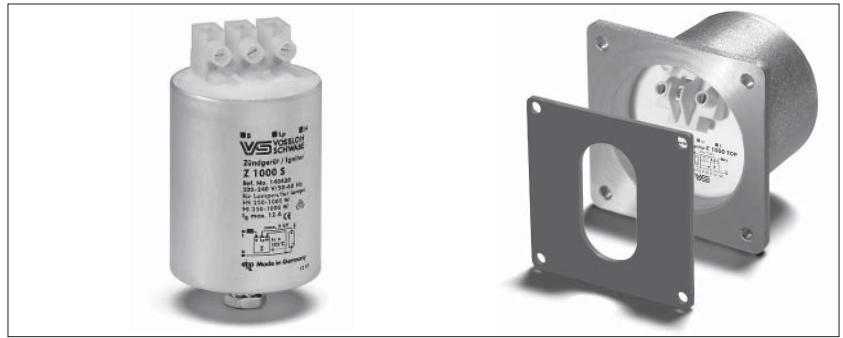
Recommended for outdoor lighting

* With IPP technology

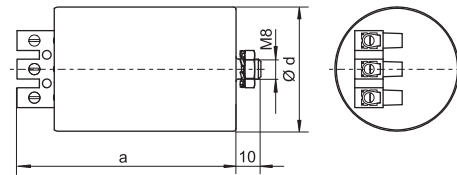
** Not suitable for C-HI lamps

Electronic Superimposed Ignitors for HS and HI Lamps 250 to 1000 W

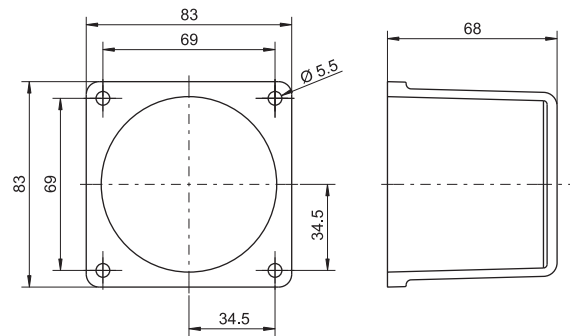
Standard version or with automatic switch-off
 For high pressure sodium lamps (HS)
 and metal halide lamps (HI)
 Phasing of the ignition voltage:
 60–90 °el and 240–270 °el
 Max. permitted casing temperature: 105 °C
 Screw terminals: 0.75–2.5 mm²
 (Z 1000 S: 0.75–4 mm²)
 Fastening: male nipple with pre-assembled
 washer and nut
 For luminaires of protection class I and II



Al casing



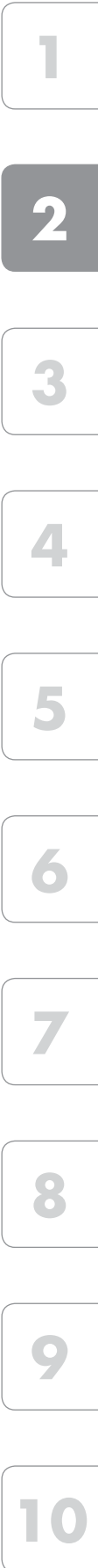
Z 1000 TOP



Type	Ref. No.	Voltage AC 50–60 Hz V	Max. lamp current A	Internal loss W	Inherent heating K	Ignition voltage kV	Load capacity µF	Switch-off time sec./Hz	Casing			Weight g	
									d (Ø) mm	a mm	b mm		c mm
Aluminium casing (Al)													
Z 1000 S	140430	220–240	12	< 6	< 35	4–5	20–100	—	50	80	—	—	340
Z 1000 TOP	140607**	220–240	12	< 6	< 35	4–5	20–100	—	—	83	83	68	620
Z 1000 S D20	141584*	220–240	12	< 6	< 35	4–5	20–100	1216/50–60	50	80	—	—	340

* With IPP technology

** For flange-mounting with gasket for degree of protection IP55



Electronic Superimposed Ignitors for HS Lamps 600 and 750 W



Standard version

For high pressure sodium lamps (HS)

Phasing of the ignition voltage:

60–90 °el and 240–270 °el

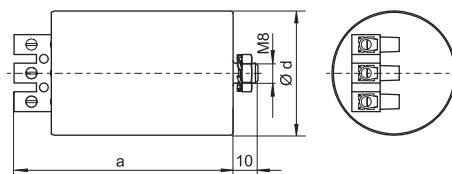
Max. permitted casing temperature: 105 °C

Screw terminals: 0.75–4 mm²

Fastening: male nipple with pre-assembled washer and nut

For luminaires of protection class I and II

Al casing



Type	Ref. No.	Voltage AC 50–60 Hz V	Max. lamp current A	Internal loss W	Inherent heating K	Ignition voltage kV	Load capacity pF	Switch-off time sec./Hz	Casing				Weight g
									d (∅) mm	a mm	b mm	c mm	
Aluminium casing (Al)													
Z 750 S	146990	220–240	8	< 3	< 20	4–5	20–100	—	50	90	—	—	360

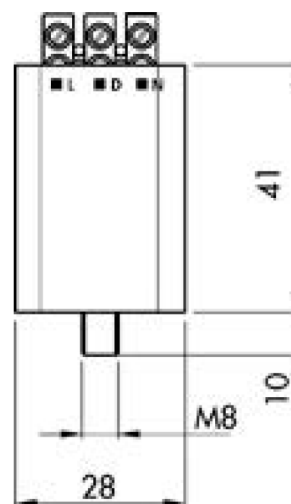
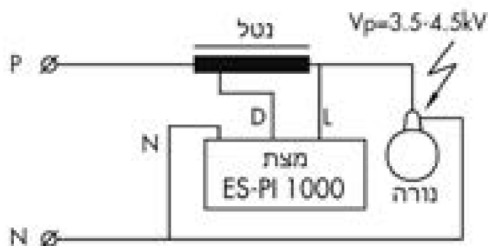


מצת פולסר מתוכנת ES-PI 1000 220-250V / 50-60Hz



מתאים לכל סוגי הנורות נל"ג ומ"ה בתחום הספקים 35-1000W להפעלה עם משגקי עין השופט הכוללים סנף הצתה מאפשר הצתה מרוחקת (עומס מרבי של 1000pF כ-12 מטר) מנגנון חכם להגנה על הציווד:

- מנגנון לזיהוי נורה שרופה או חוסר בנורה
- הפסקת ניסיונות הצתה אחרי 20 דקות (טיימר)
- הצתה באינטרוולים להארכת חיי הנורה (5 שניות ניסיון, 55 שניות המתנה)
- מזהה ומונע Cycling
- מהדקים בורגיים למוליכים בחתך 0.75-2.5mm²
- תו תקן ישראלי:
- ת"י 61347-2.1
- ת"י 60927
- 3 שנות אחריות



סוג	מק"ט	יחס סניפה	מתח שיא הפולס	קצב הפולסים	מיקום הפולסים	קיבול עומס מירבי	מתח תגובה	מתח ניתוק	הפסדים	t _a max	t _c max	נורות	
												נל"ג	מ"ה
			kV		°E	pF	Vac	Vac	W	°C	°C	W	W
ES-PI 1000	730	6%	3.5-4.5	2 / cycle	60-90	1000	180	170	0.2	85	90	35-1000	35-1000