



IP65


ULTRA


Ultra is a professional fixed downlight LED luminaire, with a deep recessed COB LED light source and features high efficiency reflector technology for excellent glare control and uniformity. Ultra offers a choice of three colour temperatures as standard (2700K, 3000K and 4000K) and delivers 90 CRI for excellent colour rendering. With binning-free LEDs carefully selected from two-step MacAdam's ellipses, colour consistency is assured throughout the unonovesette portfolio.

Ultra è un proiettore professionale a Led da incasso, mediante una posizione molto recessa della sorgente luminosa COB LED. Grazie alla tecnologia a riflettore restituisce un eccellente controllo dell'uniformità e dell'abbagliamento. Ultra offre una scelta fra tre temperature di colore come standard (2700K, 3000K e 4000K) tutte con CRI maggiore di 90 per una eccellente resa cromatica. Binning-free e due-step MacAdam's ellipses LED, assicurano consistenza del colore in tutte le versioni previste da unonovesette.

TECHNICAL DATA / DATI TECNICI:

 IP65

 Up to 12,9W @ 350mA
Up to 11,8W (Dim to Warm)

 1154 lm (3000K)
1045 lm - 28 lm (DTW)

 A++

 CRI >90


 2700K / 3000K / 4000K
Dim to warm (3000K - 1800K)

 20° / 32° / 40° / (20° / 40° DTW)

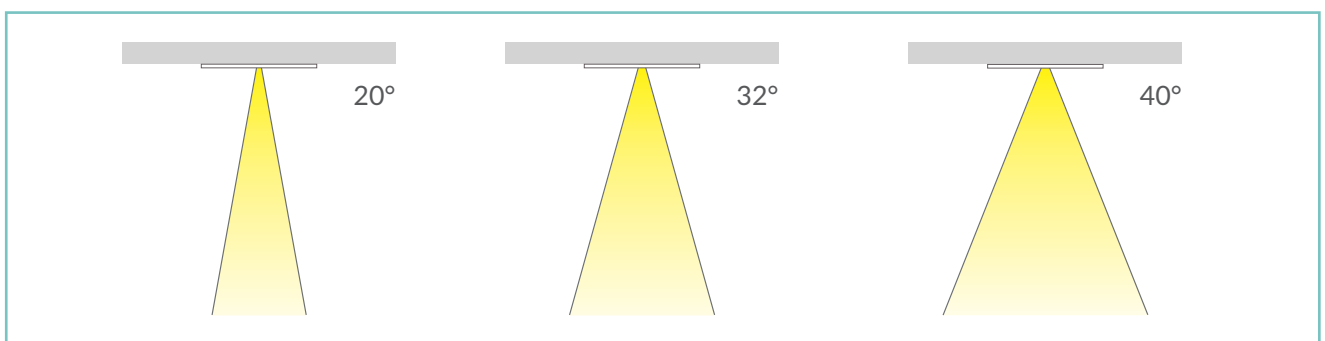
 CE

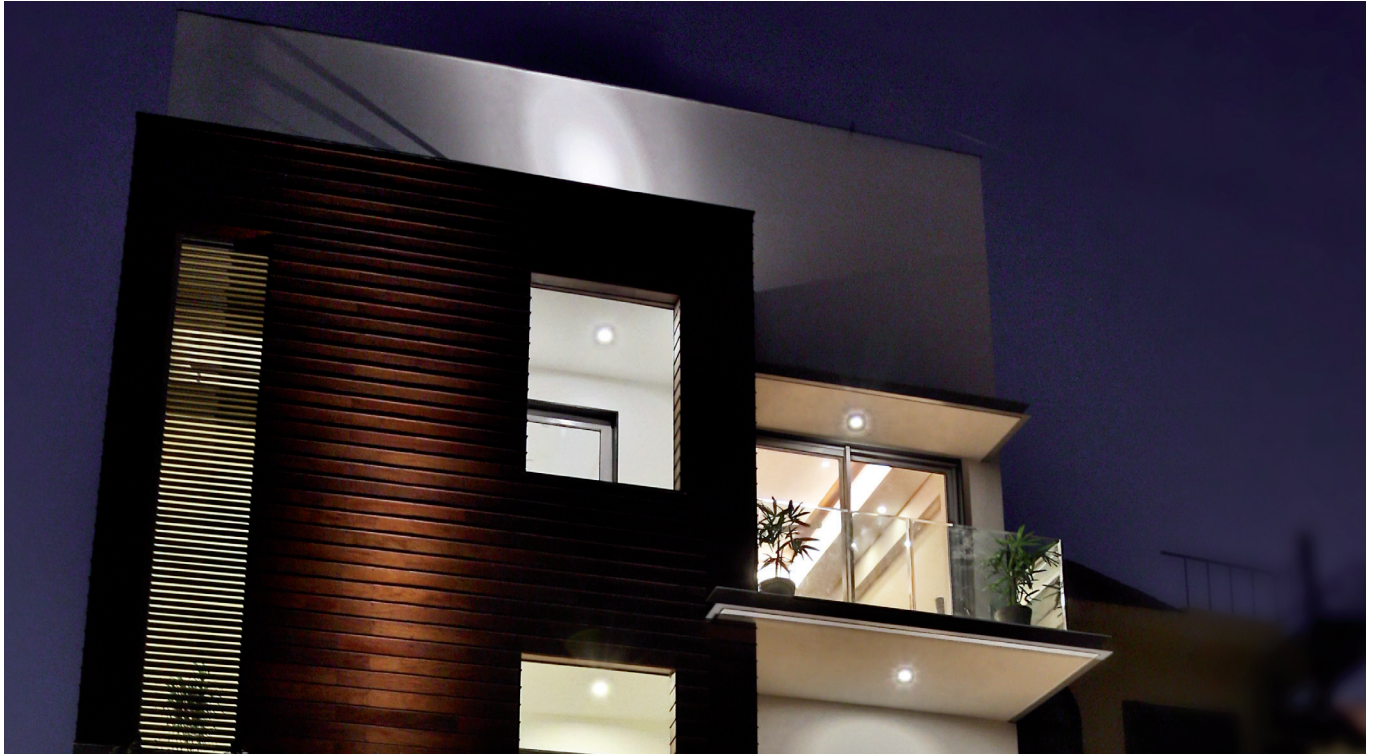
FINISHES / FINITURE:

 White RAL 9003
Bianco RAL 9003

 Black RAL 9005
Nero RAL 9005


OPTICS / OTTICHE:





unonovesette

PRODUCT CODE / CODICE PRODOTTO:

ULT = ULTRA		Select one component from each column to specify a complete configuration: Selezionare un componente per ogni colonna per la configurazione completa:		
		LED colour / Colore LED	Optics / Ottiche	Finish / Finiture
		27 = 2700K 30 = 3000K 40 = 4000K DW = Dim to warm	N = 20° (20° DTW) M = 32° W = 40° (40° DTW)	01 = White RAL 9003 / Bianco RAL 9003 02 = Black RAL 9005 / Nero RAL 9005

Standard configuration example/
Esempio di configurazione standard:

ULT.30.N.01 Ultra 3000K 20° optics white / bianco

POWER SUPPLIES 350mA CONSTANT CURRENT / ALIMENTATORE CORRENTE COSTANTE 350mA:



On / Off

Code / Codice	Input	I Out	V Out	Watt	IP	#Ultra
PSU.CX.003	110+240V / 50/60 Hz	350mA	47 V	24	IP20	Max 1
PSU.CX.004	110+240V / 50/60 Hz	350mA	43 V	20	IP20	Max 1

Dimmable / Dimmerabile

Code / Codice	Input	I Out	V Out	Watt	IP	#Ultra
PSU.CX.001 1-10V/PUSH	100+240V / 50/60 Hz	350mA	47 V	15	IP20	Max 1
PSU.CX.002 DALI	100+240V / 50/60 Hz	350mA	47 V	15	IP20	Max 1
PSU.CC.022 DTW DALI	220+240V / 47/53 Hz	350mA	40 V	20	IP20	Max 1

ACCESSORIES / ACCESSORI

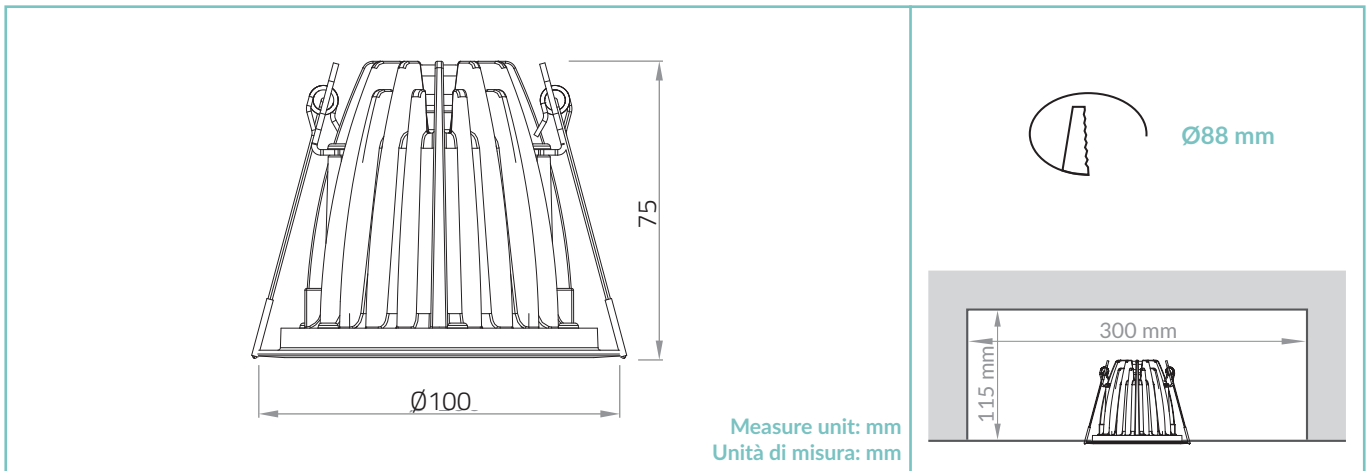
	
Honeycomb louver Schermo alveolare ACC.001	Micro prismatic diffuser Filtro diffondente microprismato ACC.002



ULTRA

TECHNICAL DRAWING / DISEGNO TECNICO:

RECESSED HOLE / FORO INCASSO:



TECHNICAL SHEET / SCHEDA PRODOTTO:

Body: Die-cast aluminium
Glass: Tempered extra clear glass 4 mm
Finishes: White RAL 9003 / Black RAL 9005
Installation: Fixing springs
Power supply cables: 35 cm NS20N PCP 2x0,5 mm²
Power supply: Constant current 350mA Max

Power consumption: 12,9 Watt
CRI: >90
Bin selection: Binning free 2 step MacAdam's
Lumenoutput (source): 1154lm (3000K) / 1045lm-28lm (DTW)
Operating temperature: -20°C +50°C
IP rating: IP65
Insulation class: Class III
Weight: 365 g
Optics: 20° / 32° / 40° / (20° / 40° DTW)
Energy rating: A++
LED colour temperature: 2700K / 3000K / 4000K / (3000K-1800K DTW)
Lifetime LED: 100000 hrs
Photo biological risk: RGO / RG1

Corpo: Pressofusione di alluminio
Vetro: Vetro temperato extra chiaro 4 mm
Finiture: Bianco RAL 9003 / Nero RAL 9005
Fissaggio: Molle di fissaggio
Cavo di alimentazione: 35 cm NS20N PCP 2x0,5 mm²
Alimentazione: Constant current 350mA Max

Potenza assorbita: 12,9 Watt
CRI: >90
Selezione bin: Binning free 2 step MacAdam's
Flusso luminoso (sorgente): 1154lm (3000K) / 1045lm-28lm (DTW)
Temperatura di funzionamento: -20°C +50°C
Grado di protezione: IP65
Classe d'isolamento: Classe III
Peso: 365 g
Ottiche: 20° / 32° / 40° / (20° / 40° DTW)
Energy rating: A++
Temperatura colore LED: 2700K / 3000K / 4000K / (3000K-1800K DTW)
Vita media LED: 100000 hrs
Rischio fotobiologico: RGO / RG1

PHOTOMETRICS / CURVE FOTOMETRICHE:

20° - 12,9 Watt

h [m]	Ø [m]E	E ₀ [lx]	≈ [lx]
0.50	0.15	11470	7775
1.0	0.35	3116	1972
1.5	0.52	1411	882
2.0	0.71	795	489
2.5	0.88	510	315
3.0	1.05	355	220

— C0 - C180 (20,0°)

32° - 12,9 Watt

h [m]	Ø [m]E	E ₀ [lx]	≈ [lx]
0.5	0.29	7890	4565
1.0	0.57	2005	1163
1.5	0.86	894	515
2.01	1.15	504	290
2.5	1.43	323	187
3.0	1.72	225	130

— C0 - C180 (32,0°)

40° - 12,9 Watt

h [m]	Ø [m]E	E ₀ [lx]E	≈ [lx]
0.5	0.36	5409	3382
1.0	0.73	1371	836
1.5	1.09	611	374
2.01	1.46	345	210
2.5	1.82	221	135
3.0	2.18	154	94

— C0 - C180 (40,0°)