

Hermetic LED luminaire, water-jet protected, dedicated to use in industrial environments.

**TECHNICAL DATA**

**Mounting:** directly on the ceiling, suspended, with mounting brackets (included)

**Body:** polycarbonate

**Colour:** gray

**Diffuser:** polycarbonate

**ELECTRICAL DATA**

**Power supply efficiency:** >91%

**Power:** 220-240V 50/60Hz

**Includes light source:** yes

**Type of equipment:** STANDARD, STUCCHI connector, DALI, STANDARD + TW 5x2,5 mm<sup>2</sup>, EM 3h, choke

**Electrical connection:** tight connector 3x2,5 mm<sup>2</sup>, tight connector 5x2,5 mm<sup>2</sup>, max 4x1,5 mm<sup>2</sup> wire

**OPTICAL DATA**

**Light distribution:** rotationally-symmetric

**Way of lighting:** direct

**GENERAL DATA**

**Lifetime (L80B10):** 60 000 h

**Additional information:** stainless steel clips included

**Other remarks:** outdoor use only under a cover, do not expose to direct sunlight and rain

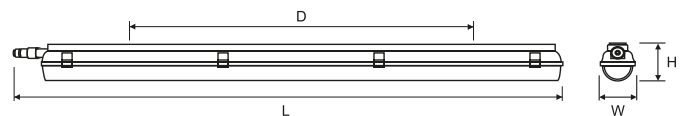
**Warranty:** 3 years

**Application:** parking areas, production halls, electricity plants, roofing



Code	Replacement of conventional technology [W]	Luminaire power [W]	Lumen luminaire [lm]	Efficacy [lm/W]	Colour temperature [K]	CRI/ Ra	Operating temperature range [°C]	Emergency kit
<b>Type of equipment: STANDARD,STUCCHI connector</b>								
300090.00002	2x36W (82W)	35	4300	123	4000	≥80	-20 ... +35	no
300090.00004	2x58W (128W)	51	6300	124	4000	≥80	-20 ... +35	no
300090.00053	2x80W (184W)	80	11600	145	4000	≥80	-20 ... +35	no
300090.00062	2x58W (128W)	45	6050	134	4000	≥80	-20 ... +35	no
<b>Type of equipment: DALI,STUCCHI connector</b>								
300090.00015	2x36W (82W)	35	4300	123	4000	≥80	-20 ... +35	no
300090.00017	2x58W (128W)	51	6300	124	4000	≥80	-20 ... +35	no
300090.00055	2x80W (184W)	80	11600	145	4000	≥80	-20 ... +35	no
300090.00070	2x58W (128W)	45	6050	134	4000	≥80	-20 ... +35	no
<b>Type of equipment: STANDARD + TW 5x2,5 mm<sup>2</sup>,STUCCHI connector</b>								
300090.00006	2x36W (82W)	35	4300	123	4000	≥80	-20 ... +35	no
300090.00008	2x58W (128W)	51	6300	124	4000	≥80	-20 ... +35	no
300090.00056	2x80W (184W)	80	11600	145	4000	≥80	-20 ... +35	no
<b>Type of equipment: STANDARD,EM 3h,STUCCHI connector</b>								
300090.00002B	2x36W (82W)	37	4300	116	4000	≥80	0 ... +35	yes
<b>Type of equipment: STANDARD,EM 3h,choke</b>								
300090.00062B	2x58W (128W)	53	6050	114	4000	≥80	0 ... +35	yes

Code	Dimensions [mm] L W H	Mounting dimensions [mm] D	Pallet quantity	Quantity in package	Net weight [kg]
<b>Type of equipment: STANDARD,STUCCHI connector</b>					
300090.00002	1340 84 99	800	120	1	1.7
300090.00004	1340 84 99	800	120	1	1.7
300090.00053	1650 134 99	1100	60	1	2.8



Luminous flux tolerance +/- 10%.

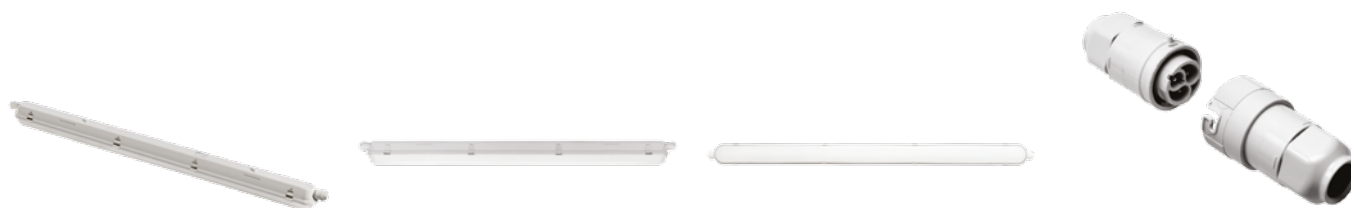
Power tolerance +/- 5%.

Lighting beam, light intensity distribution and light efficiency were examined in accordance with the EN ISO 17025:2005 norm for EN13032 norm series and the LM-79 norm.

Up-to-date product info available on our website [www.lugbox24.com](http://www.lugbox24.com)

Code	Dimensions [mm] L W H	Mounting dimensions [mm] D	Pallet quantity	Quantity in package	Net weight [kg]
<b>Type of equipment: STANDARD,STUCCHI connector</b>					
300090.00062	1650 134 99	1100	60	1	2.8
<b>Type of equipment: DALI,STUCCHI connector</b>					
300090.00015	1340 84 99	800	120	1	1.7
300090.00017	1340 84 99	800	120	1	1.7
300090.00055	1650 134 99	1100	60	1	2.8
300090.00070	1650 134 99	1100	60	1	2.8
<b>Type of equipment: STANDARD + TW 5x2,5 mm<sup>2</sup>,STUCCHI connector</b>					
300090.00006	1340 84 99	800	120	1	1.8
300090.00008	1340 84 99	800	120	1	1.8
300090.00056	1749 134 99	1100	60	1	3.0
<b>Type of equipment: STANDARD,EM 3h,STUCCHI connector</b>					
300090.00002B	1340 84 99	800	120	1	2.2
<b>Type of equipment: STANDARD,EM 3h,choke</b>					
300090.00062B	1585 134 99	1100	60	1	3.3

## OTHER PICTURES



Stucchi connector

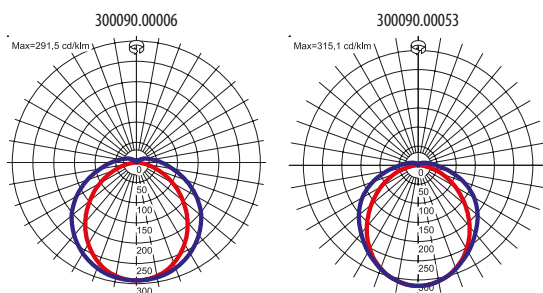
## ACCESSORIES



150020.00695

Through wiring luminaire line end cap  
(STANDARD + TW5x2,5 mm<sup>2</sup>)

## LIGHT BEAM CURVES



Luminous flux tolerance +/- 10%.

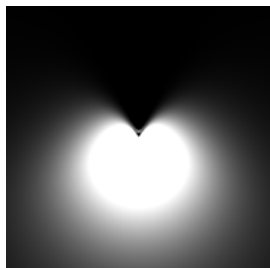
Power tolerance +/- 5%.

Lighting beam, light intensity distribution and light efficiency were examined in accordance with the EN ISO 17025:2005 norm for EN13032 norm series and the LM-79 norm.

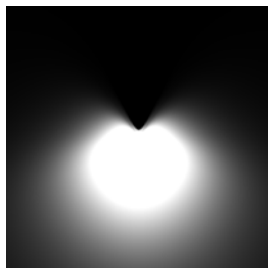
Up-to-date product info available on our website [www.lugbox24.com](http://www.lugbox24.com)

**WAY OF LIGHTING**

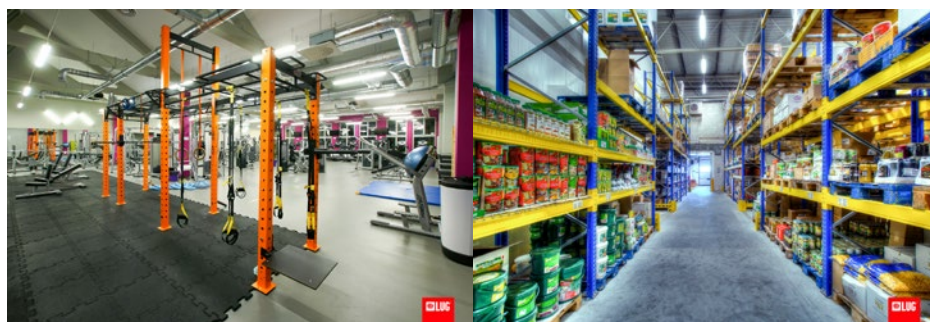
300090.00006



300090.00053

**OTHER PROJECTS**

Comarch, Lodz, Poland



Everest Fitness, Zielona Gora, Poland

Farutex, Zielona Góra, Poland



LUG Research and Production Centre, Nowy Kisielin, Poland

Luminous flux tolerance +/- 10%.

Power tolerance +/- 5%.

Lighting beam, light intensity distribution and light efficiency were examined in accordance with the EN ISO 17025:2005 norm for EN13032 norm series and the LM-79 norm.

Up-to-date product info available on our website [www.lugbox24.com](http://www.lugbox24.com)

Date of issue: 6-6-2018

The LUG Company reserves right to introduce any construction changes and improvements into the lighting luminaires